

SlimLine™ Roll-Up Safety Barrier

MACHINE GUARDING PRODUCTS

HIGH CYCLES/ HIGH SPEED BARRIER DOOR

SIMPLE AND IMPROVED DESIGN

Three piece assembly reduces installation time and overall maintenance

INCREASED SPEED

40" or 55" per second operation improves productivity and cycle time

BARRIER CURTAIN DESIGN

"New" barrier curtain tabs with 250 lbs of tear-out force provides additional barrier safety

INCREASED SAFETY

No reach-in with our full-height seal. No curtain lift with our category 4 interlock switch

INDUSTRIES #1 MACHINE GUARDING DOOR

Barrier design, category 4 switches, custom sizes, and thousands of units in use equates to *safety* and *reliability*



Increase productivity and safety with the SlimLine Barrier Door. Protect your employees from flying debris, weld flash and entry into hazardous areas.



Machine Guard



Robot Cell



Exterior Protection

For more details, contact us at 800-553-5560.

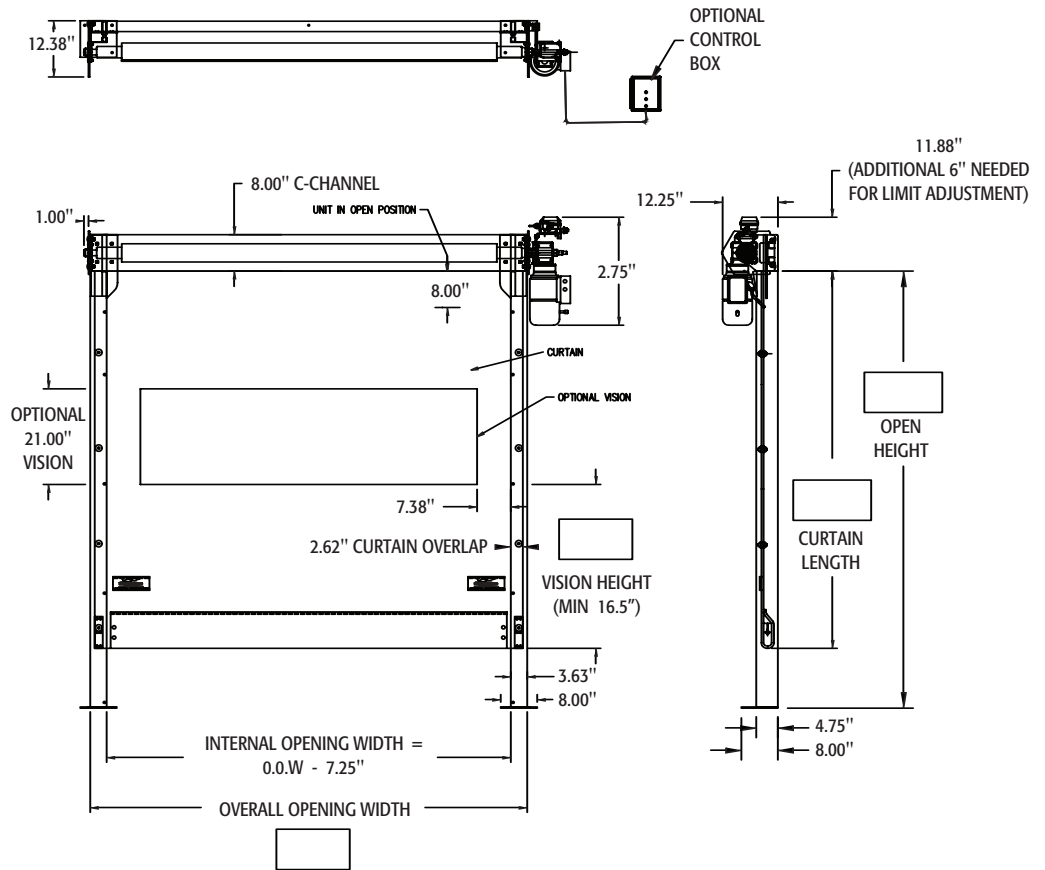
SlimLine™
Barrier Door



Frommelt®

SAFETY PRODUCTS
Integrating Fabrics With Technology

SlimLine™ Barrier Door



SPECIFICATIONS:

MODEL NUMBER: 1345 SlimLine™ Barrier Door

SIZE: Minimum: 2'-2"w x 6'-0"H
Maximum: 16'-0"w x 16'-0"H

STANDARD SPEED: 40" per second operation

CURTAIN MATERIAL: Standard 50 oz. black Armorpleat™ with optional 21" high, full-width vision panel

ROLLER TUBE: 4" diameter steel tube

GUIDE/SUPPORT: Intregal 3-1/2" x 4-3/4" 11 gauge steel

HEADER MATERIAL: 8" x 2" x 11-1/2 lbs. c-channel

MOTOR: 3 phase, 1 H.P. motor with brake

GEAR BOX: Worm gear reducer, 10:1 ratio

CONTROL BOX: Optional: STD 16" x 14" x 8"
Open/Stop/Close Pushbutton

CURTAIN TABS: UHMW barrier curtain tabs,
250 lbs. tear-out force

SAFETY FEATURES: Soft bottom edge design protects
personnel and property, optional safety
interrupt switch

WARRANTY: Limited 1-year parts

CUSTOMER _____

END USER _____

SIZE _____

QUANTITY _____

CUSTOMER APPROVAL _____

SIGNATURE _____

DATE _____



4343 Chavenelle Drive
Dubuque, Iowa 52002-2654
Toll Free: 800-553-5560
1-563-587-4401
Fax: 563-589-2776
www.frommelt.com



Printed in USA
©2007 Frommelt Safety Products