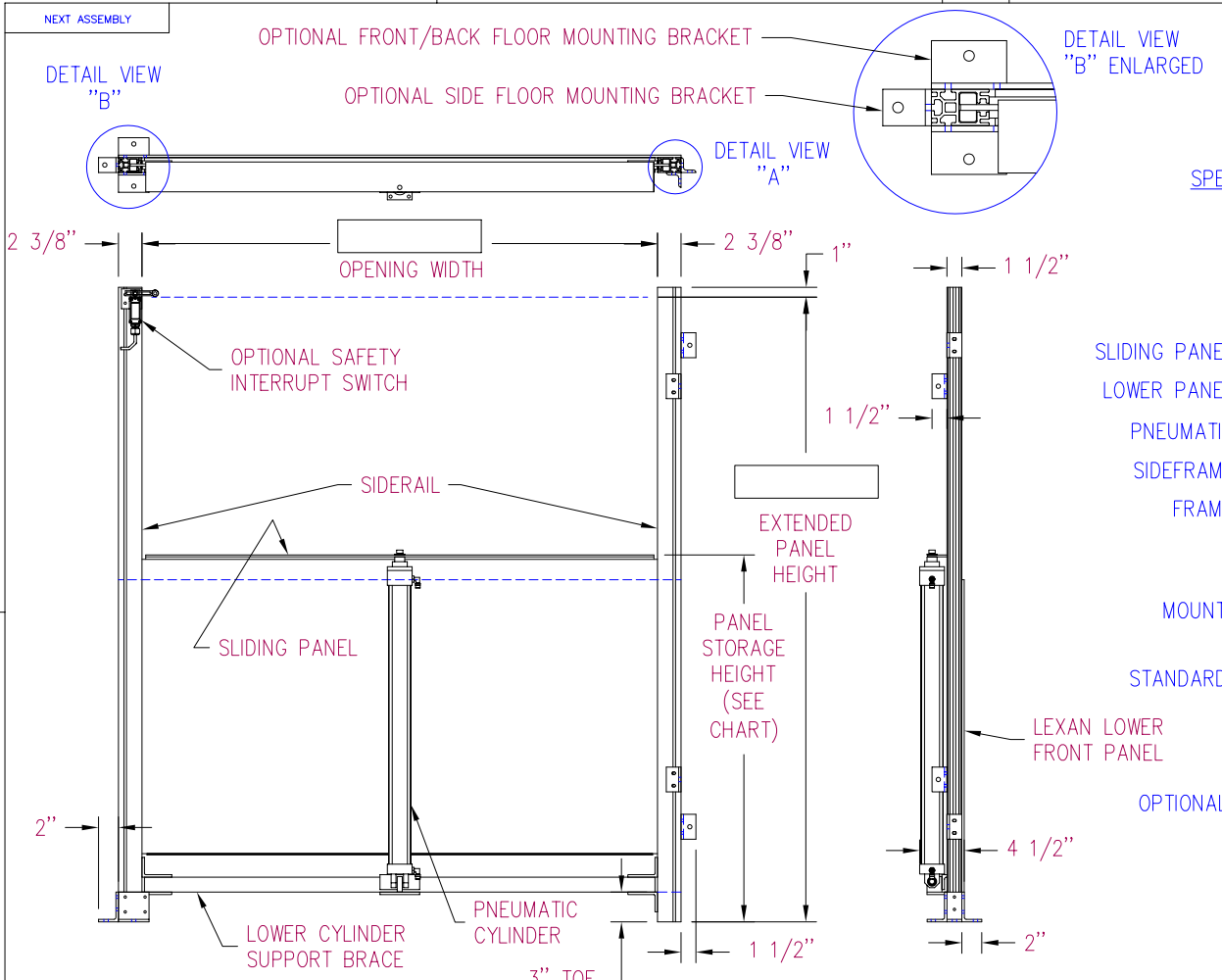


REVISION HISTORY					
REV	DESCRIPTION	ECN	DATE	BY	APPROVED
A	FROMMELT SAFETY PRODUCTS	3629	3/29/2002	AJW	
B	UPDATE E-TRUNK	4370	2/23/2004	AJW	



SPECIFICATIONS:

- SIZE LIMITS:** MINIMUM OPENING WIDTH 1' - 0"
 MAXIMUM OPENING WIDTH 6' - 0"
 MINIMUM EXTENDED PANEL HEIGHT 2' - 2"
 MAXIMUM EXTENDED PANEL HEIGHT 7' - 2"
- SLIDING PANEL MATERIAL:** STD. BLACK LEXAN (OPT. CLEAR LEXAN OR GALV. SHEET METAL).
- LOWER PANEL MATERIAL:** LEXAN, 1/4", BLACK
- PNEUMATIC CYLINDER:** 2" BORE, DOUBLE ACTING, DOUBLE CUSHIONED
- SIDEFRADE MATERIAL:** 1 1/2" x 2 3/8" ALUMINUM EXTRUSION
- FRAME MATERIAL:** ALL ALUMINUM CONSTRUCTION
- SPEED:** ADJUSTABLE (DEPENDENT ON AIR SYSTEM FLOW AND PRESSURE)
- MOUNTING STYLES:** STANDARD FACE/INJAMB MOUNT (OPTIONAL SIDE FLOOR MOUNT OR FRONT/BACK FLOOR MOUNT)
- STANDARD CONTROLS:** • JUNCTION BOX, SIZE 10 1/2" x 8 1/2" x 6 1/4", 24V DC WITH TERMINAL BLOCKS AND 24V DC 4 WAY CONTROL VALVE. (OPTIONAL 110V AC)
- OPTIONAL CONTROLS:** • CONTROL BOX, SIZE 10 1/2" x 8 1/2" x 6 1/4", 110V AC WITH OPEN, STOP, AND CLOSE PUSHBUTTONS WITH 110V AC 4 WAY CONTROL VALVE.

PANEL STORAGE HEIGHT	EXTENDED PANEL HEIGHT
17 INCHES	24 INCHES
23 INCHES	36 INCHES
29 INCHES	48 INCHES
35 INCHES	60 INCHES
41 INCHES	72 INCHES

PANEL STORAGE HEIGHT = EXTENDED PANEL HEIGHT DIVIDED BY 2, PLUS 5".

©2001 RITE-HITE DOORS INC.

INCH TOLERANCES			DO NOT SCALE DRAWING	
OVER	UP TO	+ / -	DRAWN BY	MM-DD-YY
0	0.125	0.005	JTD	11/14/1995
0.125	0.25	0.010	CHECKED BY	DATE
0.25	1.25	0.020	APPROVED BY	DATE
1.25	5	0.030	INITIAL ECN	
5	15	0.040	DATE ISSUED	
15	40	0.060	REF	
40	80	0.100		
80	-	0.125		
ANGLES FINISH +/- 1 DEG				

ITEM	QTY	PART NO.	DESCRIPTION
PARTS LIST / MATERIAL			

FROMMELT[®]
SAFETY PRODUCTS
 TITLE ARCHITECTURAL APPROVAL, VERTI-GUARD
 PHONE# (800)553-5560 (563)587-4401
 FAX # (563)589-2776

SIZE B	MODEL NUMBER 1380	DWG NO 5230A001	REV B
SCALE 1"=1'	PART #	SHEET 1 of 1	