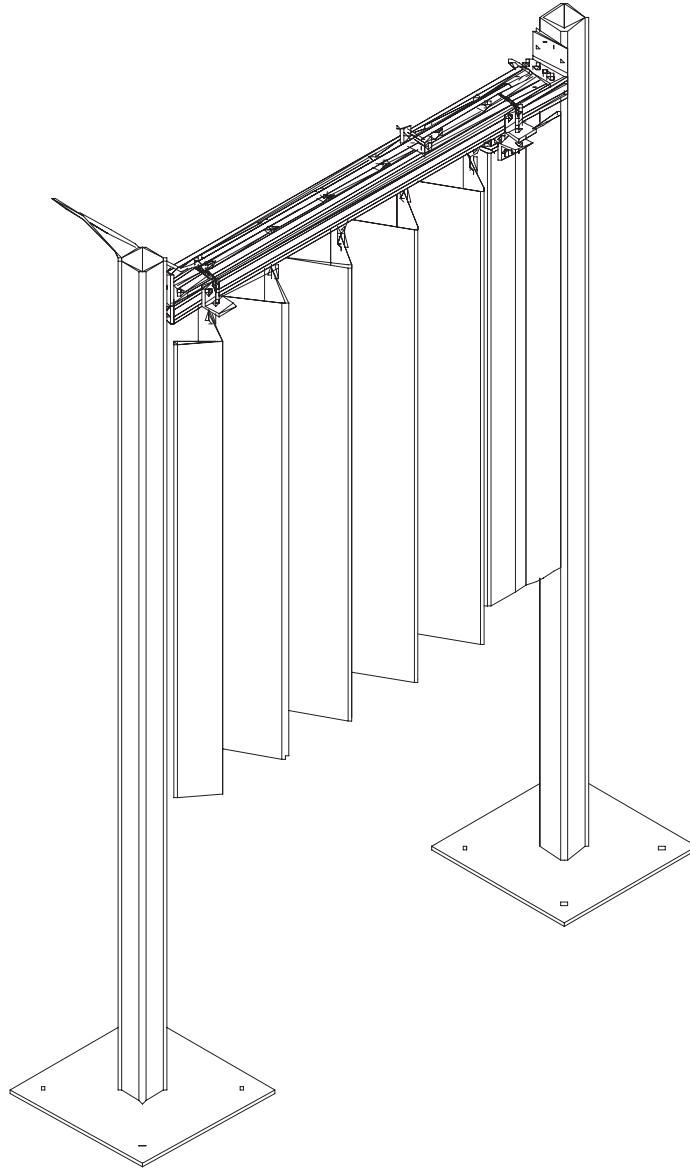


---

# SLIDE-AIR™

## AUTOMATED SAFETY CURTAIN



This Manual Covers All Doors Shipped to Date.

# PRODUCT INTRODUCTION

## TABLE OF CONTENTS

INSTALLATION INSTRUCTIONS .....	4
ELECTRICAL INSTALLATION .....	5
LIMIT SWITCH ADJUSTMENTS .....	9
TROUBLE SHOOTING / MAINTENANCE .....	10
PARTS EXPLODED VIEW .....	11
ARCHITECTURAL DRAWINGS .....	12

## NOTICE TO USER

Thank you for purchasing the SLIDE-AIR™ barrier curtain by FROMMELT® SAFETY PRODUCTS.

### Our mission is to “Improve Industrial Safety, Security and Productivity Worldwide Through Quality and Innovation.”

If any procedures for the installation, operation or maintenance of the SLIDE-AIR have been left out of this manual or are not understood, contact Technical Support at 1-563-589-2722.

Read and understand this manual before attempting to install or operate the equipment.

The SLIDE-AIR™ pneumatic sliding curtain by FROMMELT SAFETY PRODUCTS is intended to provide isolation to employees from flying debris and flash protection in welding areas or machine guarding areas. This pleated curtain is intended to open and close in the horizontal position to provide safety and access to work areas.

## SPECIAL FEATURES

- Adjustable speeds
- Heavy-Duty pleated curtain
- Separates work from employee
- Automatic-hand free operation

## TOOLS NEEDED:

Level  
Hammer  
Combination Wrenches  
Screwdriver  
Anchors  
Drill  
Hammer Drill  
Wire Strippers  
Cargo Straps (for lifting)

## LOCKOUT/TAGOUT PROCEDURES

The Occupational Safety and Health Administration requires that, in addition to posting safety warnings and barricading the work area, the power supply has been locked in the OFF position or disconnected. It is mandatory that an approved lockout device is utilized. An example of a lockout device is illustrated. The proper lockout procedure requires that the person responsible for the repairs is the only person who has the ability to remove the lockout device.

In addition to the lockout device, it is also a requirement to tag the power control in a manner that will clearly note that repairs are under way and state who is responsible for the lockout condition. Tagout devices have to be constructed and printed so that exposure to weather conditions or wet and damp locations will not cause the tag to deteriorate or become unreadable.

FROMMELT SAFETY PRODUCTS does not recommend any particular lockout device, but recommends the utilization of an OSHA approved device (refer to OSHA regulation 1910.147). FROMMELT SAFETY PRODUCTS also recommends the review and implementation of an entire safety program for the Control of Hazardous Energy (Lockout/Tagout). These regulations are available through OSHA publication 3120.

## WARRANTY

Only Frommelt® Safety Products authorized parts are to be used on this product. Failure to do so may void warranty.

FROMMELT SAFETY PRODUCTS warrants that it's SLIDE-AIR System, including electrical components, will be free from defects in design, materials and workmanship for a period of one (1) year from the date of shipment. It does not cover damage incurred from abuse, misuse or impact. Belting, fuses, bulbs, are not considered to be covered by warranty. All claims for breach of this warranty must be made within thirty (30) days after the defect is or can, with reasonable care, be discovered. To be entitled to the benefits of this warranty, the products must have been properly installed, maintained, operated within their rated capacities, and not otherwise abused. Periodic lubrication and adjustment is the sole responsibility of the owner. This is FROMMELT SAFETY PRODUCTS exclusive warranty. FROMMELT SAFETY PRODUCTS EXPRESSLY DISCLAIMS ALL IMPLIED WARRANTIES INCLUDING THE IMPLIED WARRANTIES OF MERCHANTABILITY AND FITNESS. Non-standard FROMMELT SAFETY PRODUCTS warranties, if any, must be specified by FROMMELT SAFETY PRODUCTS in writing.

In the event of any defects covered by this warranty, FROMMELT SAFETY PRODUCTS will remedy such defects by repairing or replacing any defective equipment or parts. This shall be the exclusive remedy for all claims whether based on contract negligence or strict liability. Neither FROMMELT SAFETY PRODUCTS ANY OTHER MANUFACTURER WHOSE PRODUCTS ARE THE SUBJECT OF THIS TRANSACTION, NOR ANY FROMMELT SAFETY PRODUCTS REPRESENTATIVE, SHALL IN ANY EVENT BE LIABLE FOR ANY LOSS OR USE OF ANY EQUIPMENT OR INCIDENTAL OR CONSEQUENTIAL DAMAGES OF ANY KIND WHETHER FOR BREACH OF WARRANTY, NEGLIGENCE, OR STRICT LIABILITY. The application of a manufacturer's specifications to a particular job is the responsibility of the purchaser. FROMMELT SAFETY PRODUCTS SHALL NOT IN ANY EVENT BE LIABLE FOR ANY LOSS OF THE USE OF ANY EQUIPMENT OR INCIDENTAL OR CONSEQUENTIAL DAMAGES OF ANY KIND.

## FROMMELT SAFETY PRODUCTS

4343 Chavenelle Drive  
P.O. Box 1200  
Dubuque, Iowa 52002-2654  
Toll Free Sales: 800-553-5560  
Sales: 563-589-4401  
Sales Fax: 563-589-2776  
Service: 563-589-2722  
Service Fax: 563-589-2737  
[www.frommeltsafety.com](http://www.frommeltsafety.com)

# DEFINITION AND FUNCTION

## HEADER ASSEMBLY

The header assembly includes the aluminum extrusion structure, rodless cylinder, curtain trolleys, limit switches, and air hose. The cylinder pulls the curtain open or closed across the opening when air is supplied.

## CURTAIN

The standard curtain is made of either opaque or translucent material. Standard 8" pleats allow the curtain to fold back to a compact profile when not needed.

## JUNCTION BOX ASSEMBLY (OPTIONAL)

The Junction box assembly includes a four way air control valve, and the necessary terminal blocks to easily incorporate an output signal from the existing machine controller. The four way valve is available as 24 VDC or 110 VAC.

## CONTROL BOX ASSEMBLY (OPTIONAL)

The control box assembly includes a four way air control valve, open, close and stop push buttons, and (2) 24 VDC relays. This control box allows the SLIDE-AIR to be opened or closed by momentarily pushing a button, or from a 24 VDC output signal from a machine controller. This box requires use of a 110 VAC air valve.

## VERTICAL SUPPORTS (OPTIONAL)

The vertical supports are rugged 3" square tubing. Brackets allow easy assembly of the cylinder assembly to the vertical supports.

Dual vertical supports will be mounted on 8" square plates.

A single pedestal support will be mounted on 16" square plates to compensate for the hanging load.

## SITE EVALUATION

The SLIDE-AIR can be installed either as a free standing unit or mounted to a machine structure in a machining, welding or other type of environment:

*Please verify before starting installation:*

1. If optional vertical support posts are not being used, how will the SLIDE-AIR assembly be mounted to the workstation?

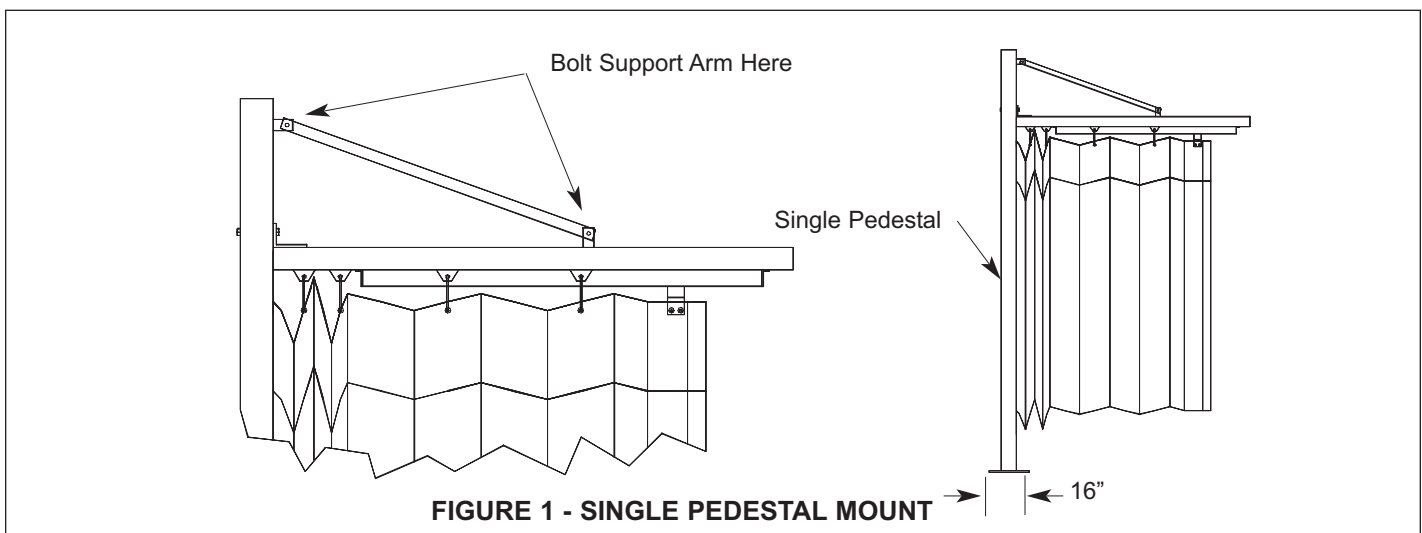
2. If anchoring to the floor is there anything buried in the floor where the anchors go?
3. Does the installation allow adequate clearance for robotic machining, welding or other types of operation?
4. Can electrical power to the workstation be shut off without interfering with other plant operations?
5. Is there an air supply connection run to the installation site?

## PARTS INVENTORY

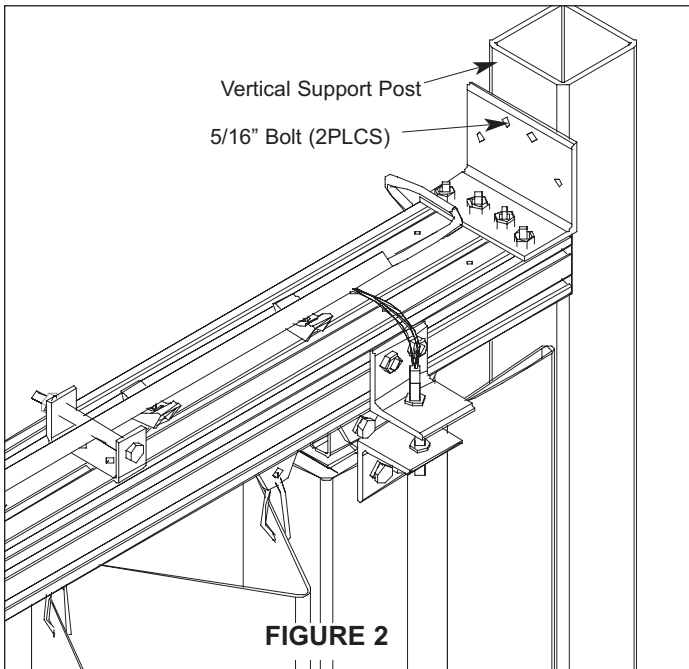
1. Remove all assemblies and parts from the shipping container.
2. Arrange parts on the floor using the exploded view as a guide, see [Page 11](#).
3. Check to insure all parts are included. Call Technical Support if you have any questions.

## SINGLE PEDESTAL MOUNT

1. The installation for the dual support posts can be used for the single pedestal mount, [Figure 1](#).
2. Attach the support arm to the pedestal and the header for support.



# INSTALLATION INSTRUCTIONS



## INSTALL WITH VERTICAL SUPPORTS

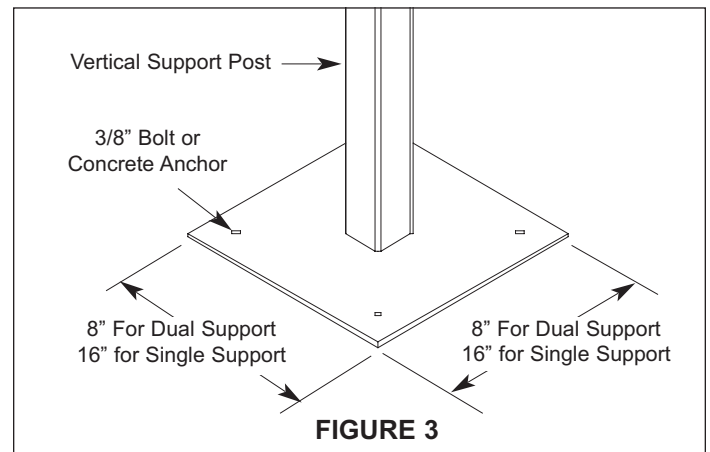
1. Secure the SLIDE-AIR assembly to the forks of a fork truck with C-clamps. Position with the curtain and air cylinder hanging down. Check the assembly to verify that installation will provide the desired open/close direction.
2. Raise the SLIDE-AIR assembly and position it so that the support brackets align with the holes drilled in the top of the vertical support posts, **Figure 2**.
3. Insert (2) 5/16" x 4" bolts through the vertical support posts and the support bracket. Repeat for second support posts. Tighten all bolts securely, **Figure 2**.
4. Level the vertical support posts and fasten securely. Use 3/8" bolts if fastening to a machine base or 3/8" concrete anchors if securing to a concrete floor, **Figure 3**.
5. Remove clamps securing SLIDE-AIR assembly to the fork truck.

## INSTALL W/O VERTICAL SUPPORTS

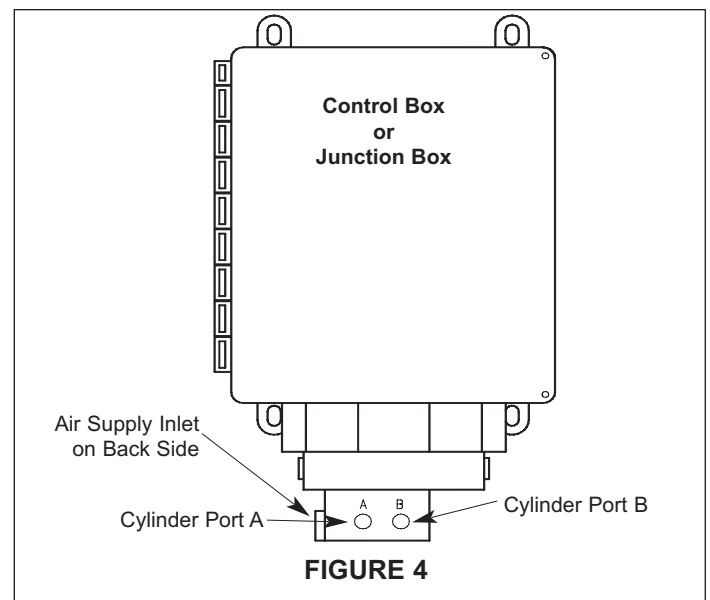
1. Secure the SLIDE-AIR cylinder assembly to the forks of a fork truck with C-clamps. Position with the curtain and air cylinder hanging down. Check the assembly to verify that installation will provide the desired open/close direction.
2. Raise the assembly and position it so that the assembly is in close proximity to where it will be hung.
3. Support the SLIDE-AIR assembly to the machine with a minimum of (4) 5/16" bolts. Drill holes in the aluminum extrusion as necessary, but do not drill through an area that will effect the travel of the curtain or the trolleys.
4. Remove clamps securing Slide-Air assembly to the fork truck.

## AIR SUPPLY INSTALLATION

1. Route the main air line through the pressure regulator provided. Maintain an operating pressure between 60 and 90 psi.



2. Connect an air line from the outlet of the pressure regulator to the inlet of the four way control valve on the junction box or control box, **Figure 4**.
3. Using the quick connections connect both air lines from each end of the cylinder to outlet ports A and B on the four way control valve, **Figure 4**.



# ELECTRICAL INSTRUCTIONS

## WARNING!!!

When working with electrical or electronic controls, make sure that the power source has been locked out and tagged according to OSHA regulations and approved local electrical codes.

### ELECTRICAL INSTALLATION WITH CONTROL BOX (OPTIONAL)

1. Install control box and remote disconnect approximately 48" above floor level.
2. Provide 110V AC power to the control box. Wire per the wiring diagram, [Figure 5 & Page 8](#).
3. Connect limit switch wires to the terminal blocks per the wiring diagram provided, [Figure 5](#).

### POWER / STARTUP

1. Turn power on to the control box.
2. Turn on air supply.
3. Press the open button; the curtain will slide to the extended position.

### INCOMING POWER (110 VOLTS)

- A. Black to #1 terminal block
- B. White to #2 terminal block
- C. Green to ground terminal block

### LIMIT SWITCH CABLE

- D. Orange and white to #7 terminal block
- E. Black to #5 terminal block and Blue to #6 terminal block for normally open limit switch (cap or cut green and red cables)

## IMPORTANT!!!

The control/junction box and all wiring should be installed by a qualified electrician in accordance with all national and local electrical codes.

If rigid conduit is installed, bonding must be maintained between conduit and ground connections by using ground bushings and a jumper wire.

### ELECTRICAL INSTALLATION WITH JUNCTION BOX (OPTIONAL)

1. Install junction box and suggested remote disconnect (supplied by others) in an area that can be accessed for maintenance.
2. Bring signal wires from the machine controller to the terminal blocks provided. The signal wires type will need to match the type of valve provided (110VAC or 24 VDC). Connect the limit switch wires to the appropriate terminal blocks. Wire per instructions provided, [Figure 6 & Page 7](#).

or

- F. Red to #5 terminal block and Green to #6 terminal block for normally closed limit switch (cap or cut blue and black cables)
- G. Pin #1 is 24 volts DC +
- H. Pin #8 is 24 volts DC -

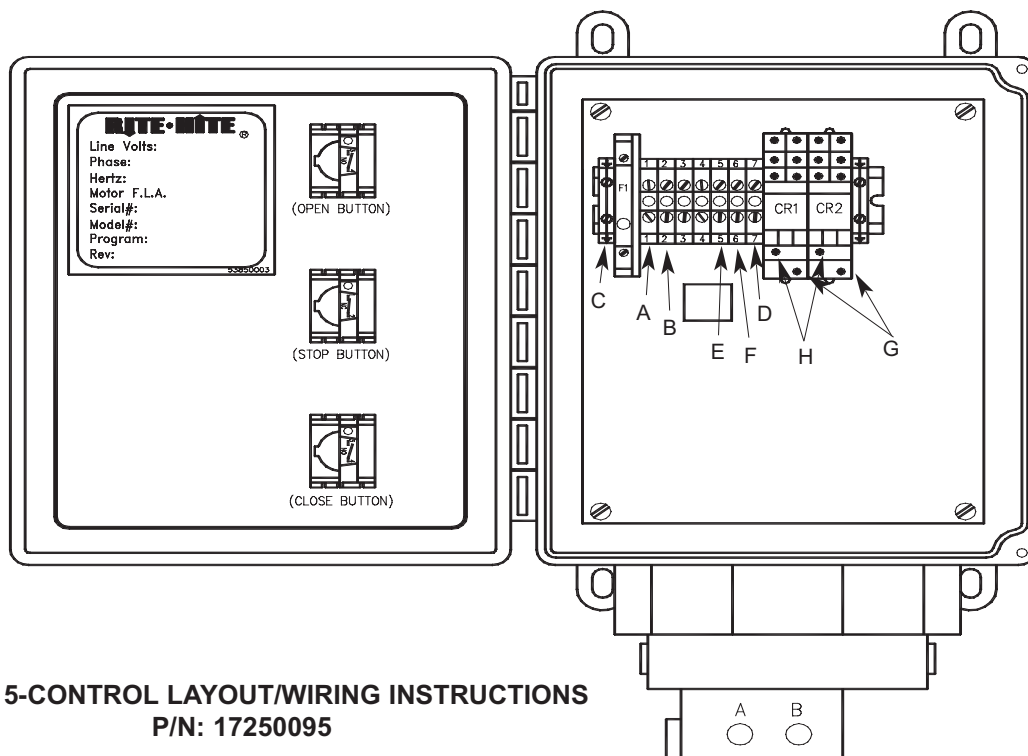


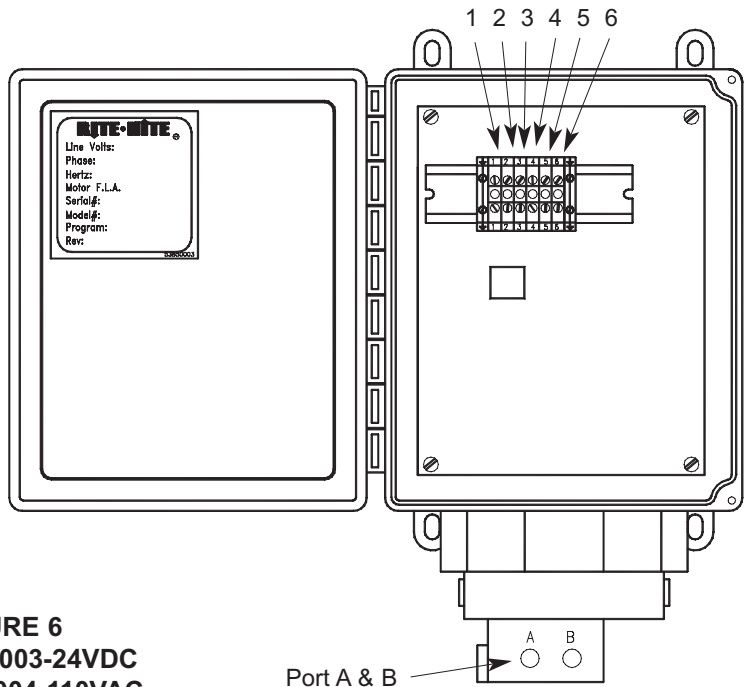
FIGURE 5-CONTROL LAYOUT/WIRING INSTRUCTIONS  
P/N: 17250095

# ELECTRICAL INSTRUCTIONS

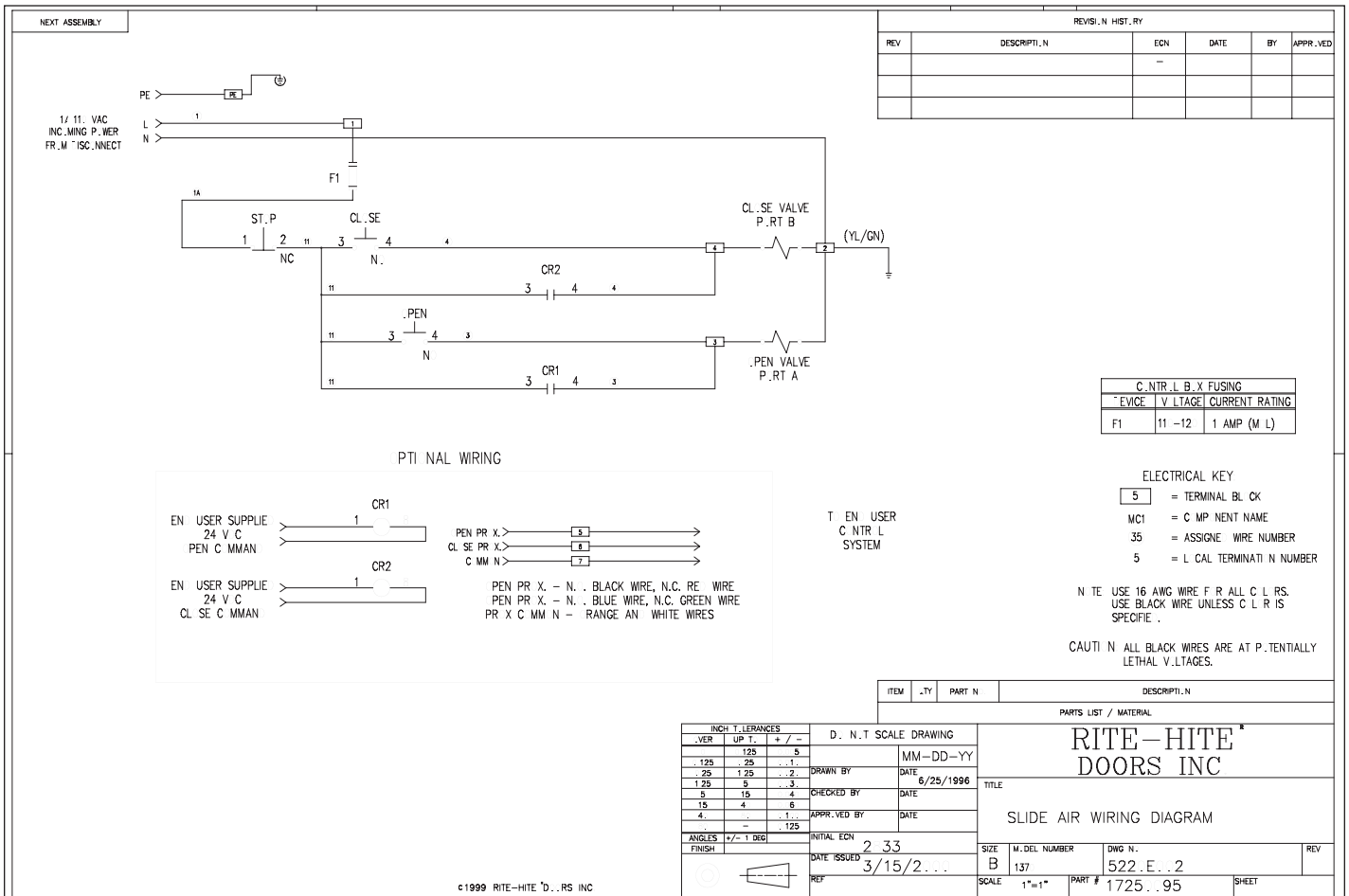
## TERMINAL STRIP WIRING

1. Input signal for cylinder port A (24V or 110V)
2. Input signal for cylinder port B (24V or 110V)
3. 24 volt or 110 volt
4. Signal from open limit switch - black wire (NO) or red wire (NC)
5. Signal from closed limit switch - blue wire (NO) or green wire (NC)
6. Limit switch common - orange wire and white wire

Note: Cap or cut the unused limit switch wires



**FIGURE 6**  
**P/N: 53300003-24VDC**  
**P/N: 53300004-110VAC**



# ELECTRICAL WIRING

REVISION HISTORY					
REV	DESCRIPTION	ECN	DATE	BY	APPROVED

**FIELD WIRING**

**RITE-HITE WIRING**

11 VAC PEN SIGNAL → [1] → PEN VALVE P.R.T. A

C.M.M.N → [3] → PEN VALVE P.R.T. A

11 VAC CL. SE. SIGNAL → [2] → CL. SE. VALVE P.R.T. B

PEN PR. X. → [4]

CL. SE. PR. X. → [5]

C. M.M.N → [6]

T. EN. USER CONTROL SYSTEM ← [4, 5, 6]

**ELECTRICAL KEY**

[5] = TERMINAL BLOCK

MC1 = COMPONENT NAME

35 = ASSIGNED WIRE NUMBER

5 = LOCAL TERMINATION NUMBER

PEN PR. X. - N.C. BLACK WIRE, N.C. GREEN WIRE  
 PEN PR. X. - N.C. BLUE WIRE, N.C. GREEN WIRE  
 PR. X. C. M.M.N - RANGE AND WHITE WIRES

INCH TOLERANCES			DIMENSIONAL SCALE DRAWING	
VER	UP	+ / -	DATE	MM-DD-YY
125	25	5	DRAWN BY	6/25/1996
25	1.25	2	CHECKED BY	DATE
1.25	5	3	APPROVED BY	DATE
5	15	4	INITIAL ECN	2 33
15	4	6	DATE ISSUED	3/15/2000
4	-	1	REF	
ANGLES +/- 1 DEG			FINISH	

MATERIAL / PART N

**RITE-HITE<sup>®</sup> DOORS INC**

TITLE: SLIDE AIR JUNCTION BOX WIRING DIAGRAM (11 VAC)

SIZE: A | M DEL NUMBER: 137 | DWG N: 522 E 4 | REV:  

SCALE: 1"=1" | PART #: 5353 | SHEET: 4

©2000 RITE-HITE DOORS INC

REVISION HISTORY					
REV	DESCRIPTION	ECN	DATE	BY	APPROVED

**FIELD WIRING**

**RITE-HITE WIRING**

24 V C .PEN SIGNAL → [1] → PEN VALVE P.R.T. A

24 V C → [3] → PEN VALVE P.R.T. A

24 V C CL. SE. SIGNAL → [2] → CL. SE. VALVE P.R.T. B

PEN PR. X. → [4]

CL. SE. PR. X. → [5]

C. M.M.N → [6]

T. EN. USER CONTROL SYSTEM ← [4, 5, 6]

**ELECTRICAL KEY**

[5] = TERMINAL BLOCK

MC1 = COMPONENT NAME

35 = ASSIGNED WIRE NUMBER

5 = LOCAL TERMINATION NUMBER

PEN PR. X. - N.C. BLACK WIRE, N.C. GREEN WIRE  
 PEN PR. X. - N.C. BLUE WIRE, N.C. GREEN WIRE  
 PR. X. C. M.M.N - RANGE AND WHITE WIRES

INCH TOLERANCES			DIMENSIONAL SCALE DRAWING	
VER	UP	+ / -	DATE	MM-DD-YY
125	25	5	DRAWN BY	6/25/1996
25	1.25	2	CHECKED BY	DATE
1.25	5	3	APPROVED BY	DATE
5	15	4	INITIAL ECN	2 33
15	4	6	DATE ISSUED	3/15/2000
4	-	1	REF	
ANGLES +/- 1 DEG			FINISH	

MATERIAL / PART N

**RITE-HITE<sup>®</sup> DOORS INC**

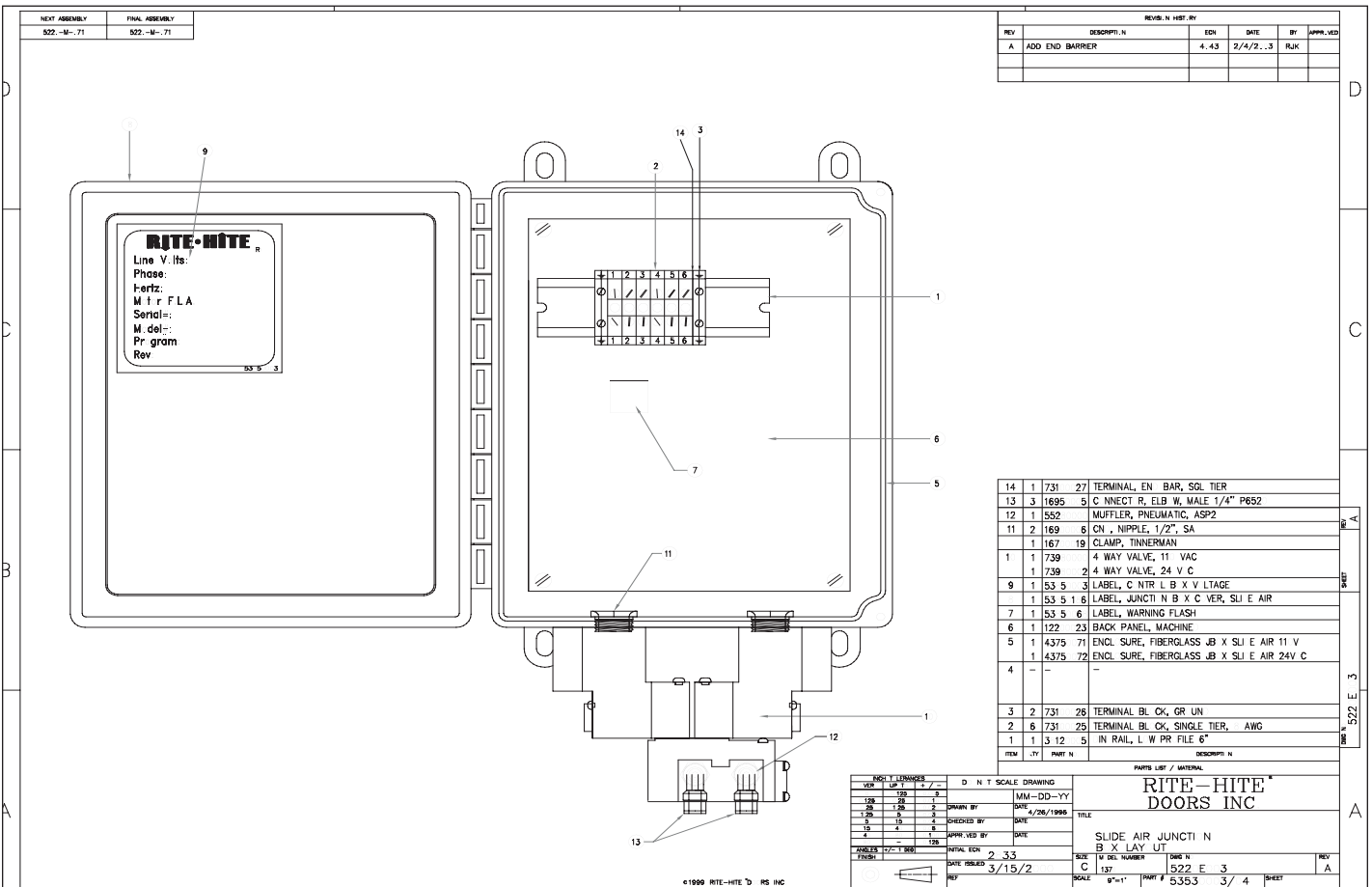
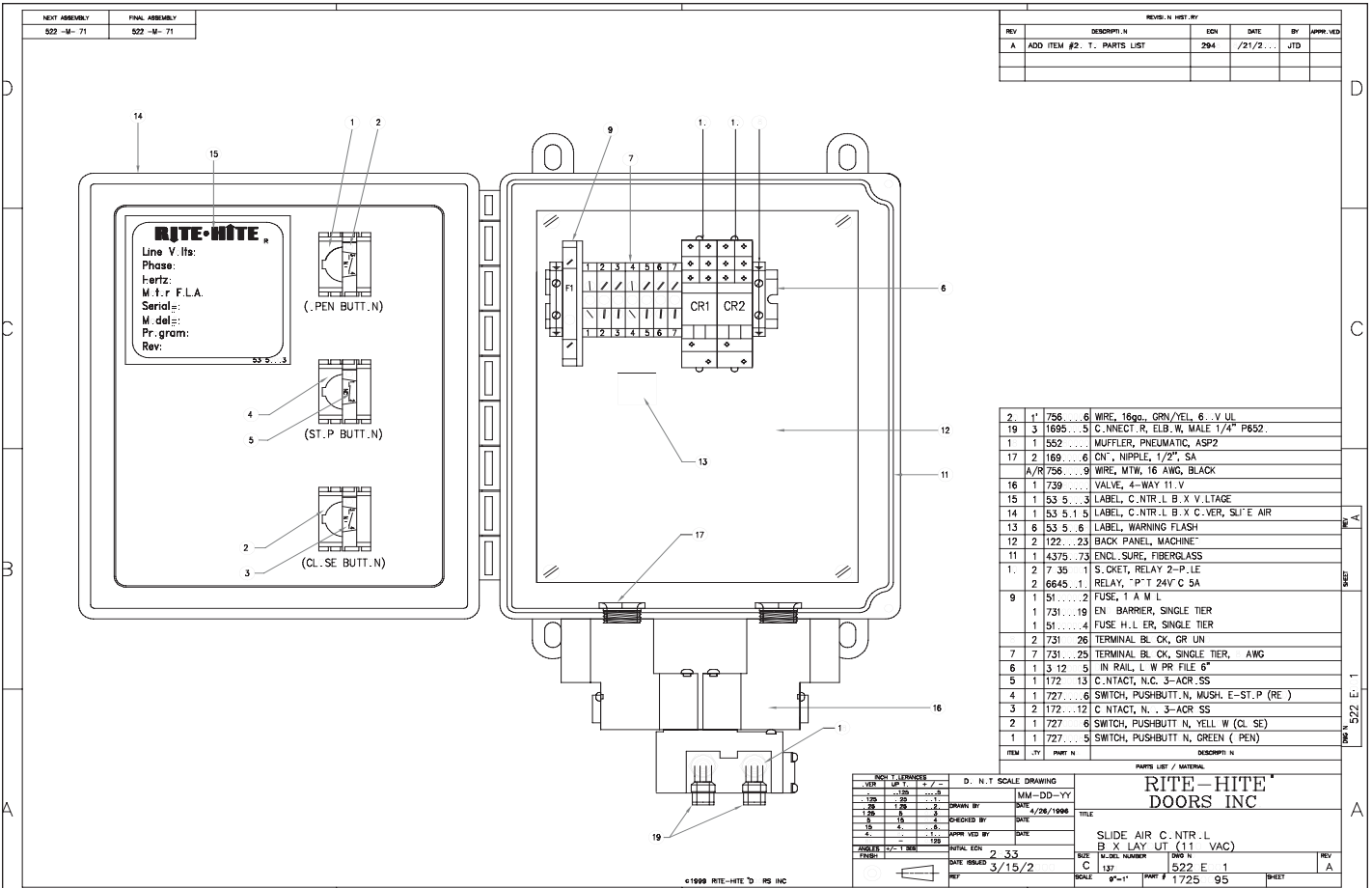
TITLE: SLIDE AIR JUNCTION BOX WIRING DIAGRAM (24 VDC)

SIZE: A | M DEL NUMBER: 137 | DWG N: 522 E 5 | REV:  

SCALE: 1"=1" | PART #: 5353 | SHEET: 3

©2000 RITE-HITE DOORS INC

# ELECTRICAL BOXES



## LIMIT SWITCH ADJUSTMENT

1. Limit switches can be adjusted by loosening the limit switch bracket bolts and sliding the bracket to the correct location, [Figure 7](#).
2. Maintain a 1/4" to 3/8" gap between the limit switch and the limit switch magnet.
3. Limit switches are normally open and are closed when the switch and magnet are aligned.
4. For adjusting the closed limit switch see [Figure 7](#).
5. For adjusting the open limit switch see [Figure 8](#).

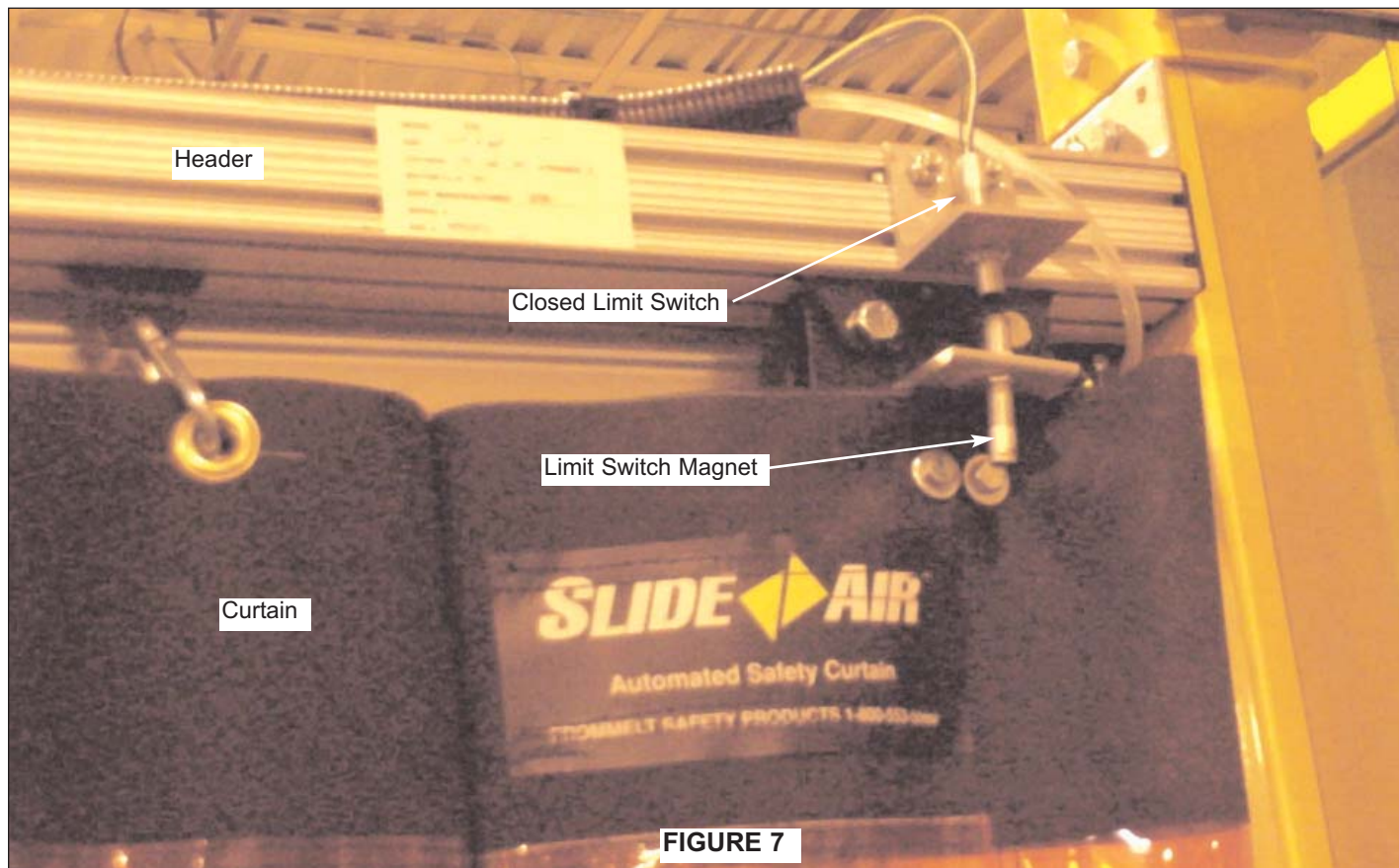


FIGURE 7

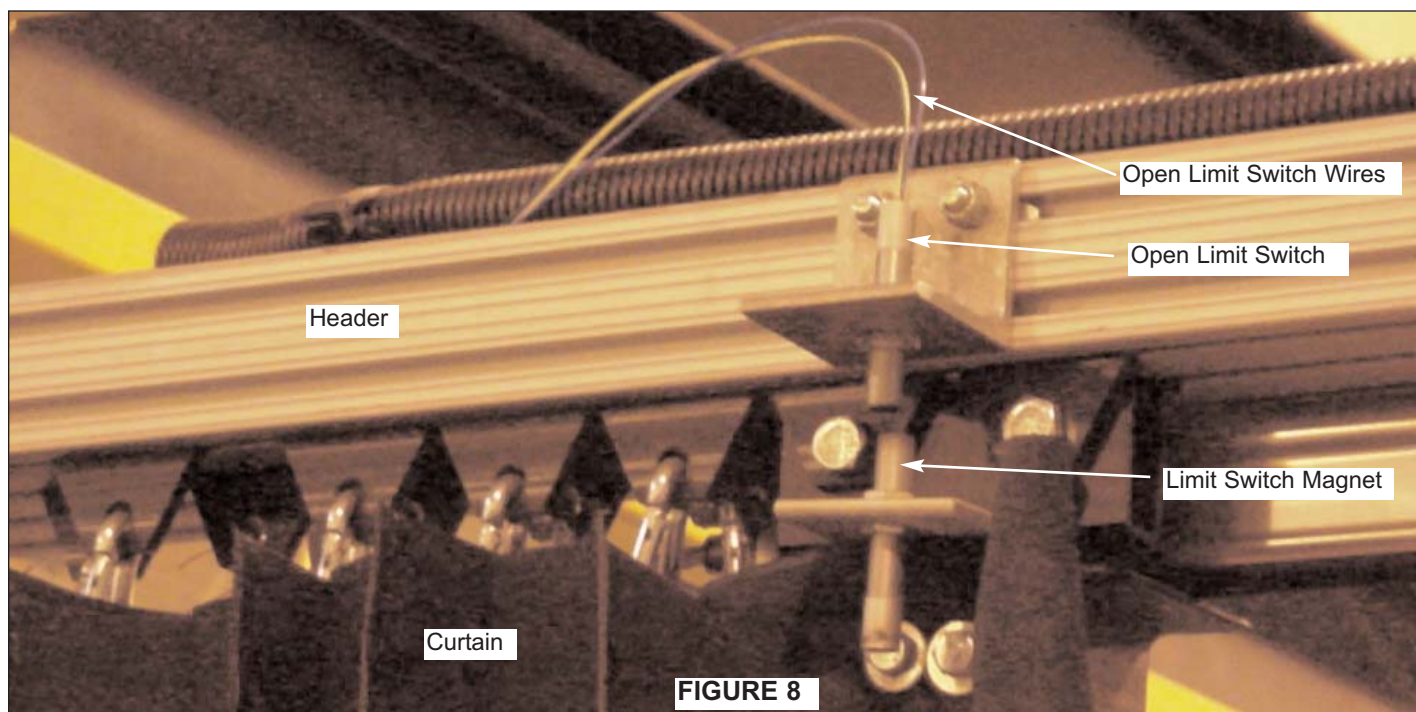


FIGURE 8

# TROUBLESHOOTING/MAINTENANCE

## MONTHLY

1. Visually inspect the Slide-Air curtain through an open and close cycle to verify proper operation and that door is fully opening and closing.
2. Clean the curtain with a warm soapy solution (hand dish washing soap).
3. Inspect all air, electrical, and mounting hardware connections. Make sure all connections are tight and secure.

2. Check the distance between the limit switch and magnet in both the open and closed position. The gap should be between 1/4" and 3/8". Adjust if required.
3. Check aluminum track for debris buildup. Clean if necessary.

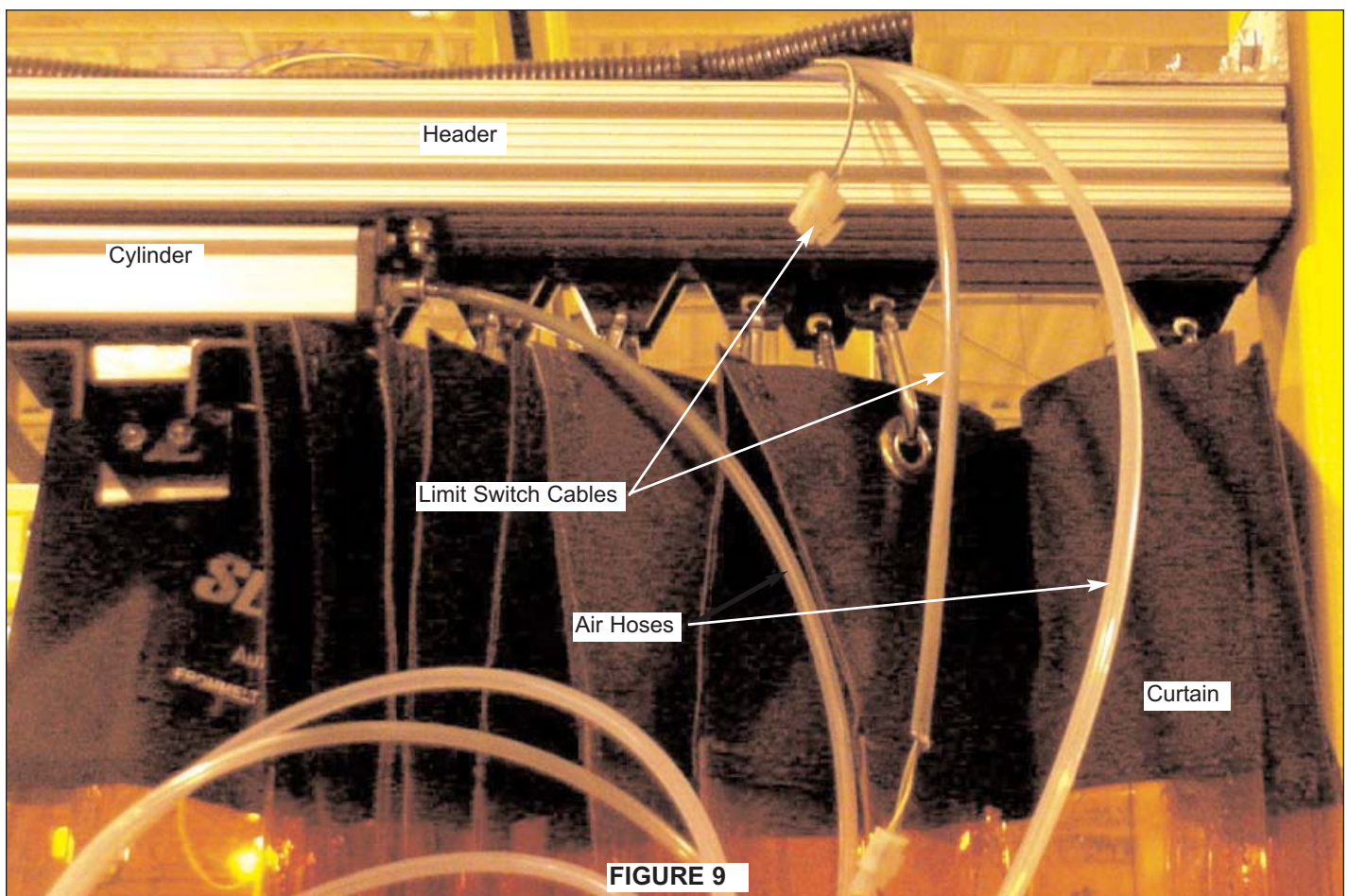
See **Figure 9** below for Limit Switch Cables, Air Cylinder, and Hoses.

## EVERY SIX MONTHS

1. Inspect all parts for signs of wear and replace as necessary.

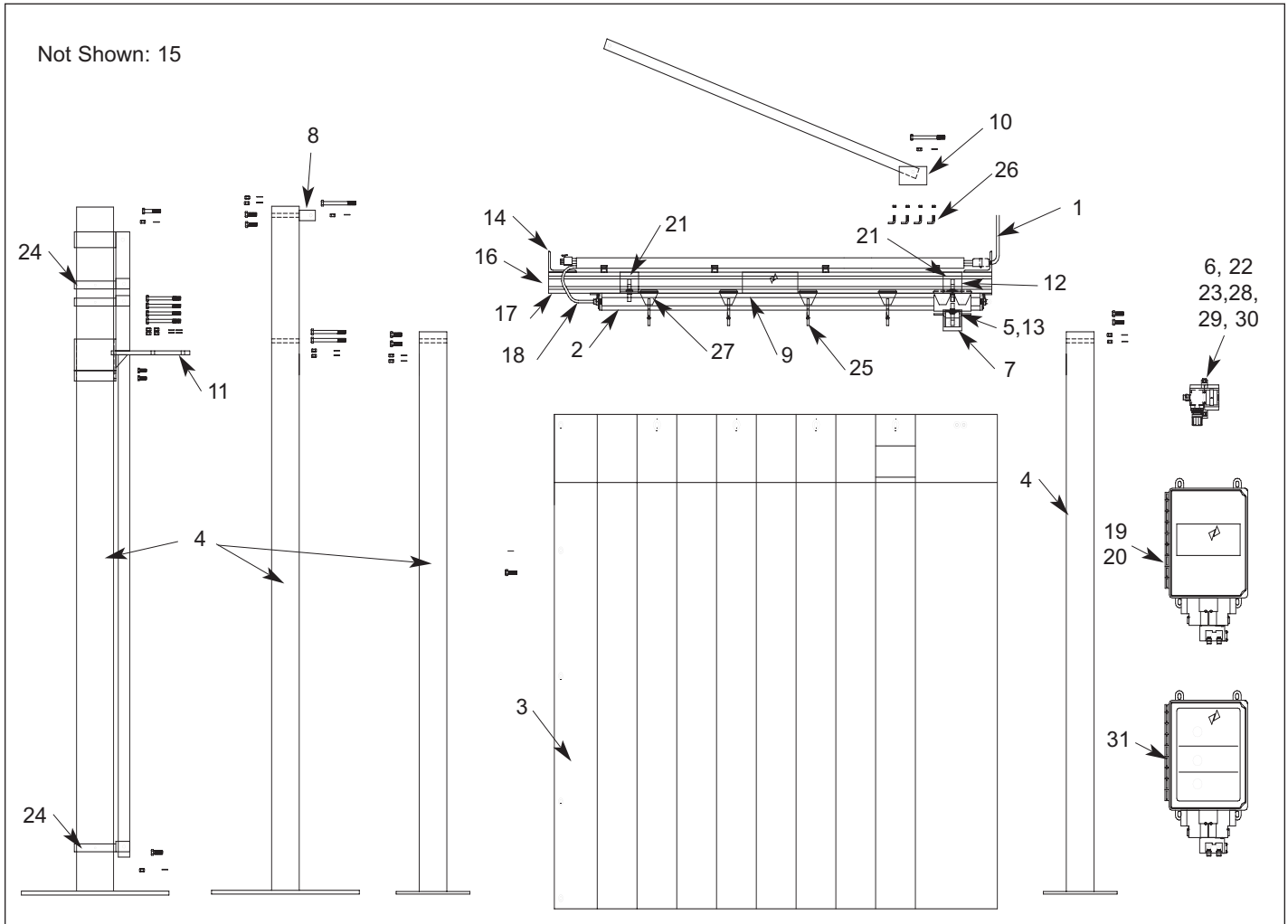
# TROUBLESHOOTING, REPAIR AND ADJUSTMENTS

Problem	Cause	Remedy
Curtain remains open, does not close	Air hose leak	Replace air hose
	Bad air line connection	Check all air connections for a tight secure fit
	Bad limit switch, no signal to PLC	Replace with new limit switch
Curtain has jerky movement	Lead trolley bolts loose	Tighten all bolts on lead trolley
	Excessive build up of debris in track	Use an air nozzle to clear debris from the track



**FIGURE 9**

# SLIDE-AIR SERVICE PARTS/LIST



ITEM	QTY	DESCRIPTION	P/N	ITEM	QTY	DESCRIPTION	P/N
1	1	Limit Switch Cable	1582....	18	a/r	Hose, Air Line, 1/4", Natural	52850002
2	1	Air Cylinder, Rodless	1975....	19	1	Junction Box, 24VDC Slide-Air	53530003
3	1	Curtain Assembly	2817....	20	1	Junction Box, 110VAC, Slide-Air	53530004
4	1	Pedestal Support	7250....	21	2	Limit Switch Assembly	53750015
5	1	Limit Switch Magnet	10200002	22	1	Regulator w/o Gauge	66500000
6	1	Bracket, Regulator Mount	14500181	23	1	Gauge, Regulator	66500001
7	1	Bracket, Curtain Position, 1370	14500182	24	a/r	Ring, Swivel, Stop	67020036
8	1	Bracket, Vertical Support, 1370	14500236	25	A/R	Hanging Hooks	67650003
9	a/r	Bracket, Clip Holder	14500378	26	a/r	Screw, Right Angle, 1/4-20 x 3/4"	67860075
10	1	Bracket, Support, Header	14500536	27	A/R	Trolley Curtain Hanger	73850048
11	1	Bracket, Weldment, Swivel Head	14500537	29	1	Valve, 110V, 4 Way, Air	73980000
12	2	Bracket, Limit Switch Holder	14501068	39	1	Valve, Lockout	73980001
13	1	Bracket, Limit Switch Magnet Holder	14501069	30	1	Valve, 24V, 4 Way, 2.5 Watt, Air	73980002
14	2	Support Bracket	14501070	31	1	Control Box	17250095
15	1	Cable, Ass'y, Cbox, 13'	15650047				
16	4	Plastic Endcaps (screw 67850004)	43850061				
17	A/R	Channel, Aluminum Extrusion	44850126				

# ARCHITECTURAL DRAWING

NEXT ASSEMBLY

PTI. NAL SINGLE SUPP RT MOUNTING C NFIGURATI N.

SINGLE VERTICAL SUPP. RT WITH 16" x 16" BASE PLATE

BASE PLATE

16" RITE-HITE "D" RS INC

REV	DESCRIPTI. N	ECN	DATE	BY	APPR. VED
A	UPDATE FR. MMELT SAFETY PR. DUCTS	3629	3/29/2...2	AJW	
B	RELEASE 4. MIL SHADE	36 5	5/3/2...2	AJW	
C	UPDATE E--TRUNK	437.	2/23/2...4	AJW	

**SPECIFICATI. NS.**

**SIZE LIMITS**  
 MINIMUM WIDTH 2' - 0"  
 MINIMUM HEIGHT 2' - 0"  
 MAXIMUM WIDTH 12' - 0"  
 MAXIMUM HEIGHT 11' - 0"

**CURTAIN MATERIAL**  
 ST. 4. MIL. RANGE PVC  
 PT. 4. MIL. SHA. E. PVC  
 PT. 35. z. BLACK HYPAL. N

**PNEUMATIC CYLIN'ER**  
 1" B. RE R. LESS CYLIN'ER

**HEA'ER MATERIAL**  
 2" x 4" ALUMINUM EXTRUSI. N

**SPEE'.**  
 A JUSTIBLE

**.PTI. NAL C. NTR. LS**  
 JUNCTI. N B. X, SIZE 1. 1/2" x 1/2" x 6 1/4", 24V °C WITH TERMINAL BL. CKS AN 24V °C 4 WAY C. NTR. L VALVE. (.PTI. NAL 11. V AC)

**PTI. NAL C. NTR. LS**  
 C. NTR. L B. X, SIZE 1. 1/2" x 1/2" x 6 1/4", 11. V AC WITH .PEN. ST. P. AN CL. SE PUSHBU TT. NS WITH 11. V AC 4 WAY C. NTR. L VALVE.

CURTAIN ST. RAGE AREA	.PENING WI TH
11 INCHES	24 INCHES
13 INCHES	4 INCHES
17 INCHES	72 INCHES
19 INCHES	96 INCHES
21 INCHES	12 INCHES

ITEM	TY	PART N.	DESCRIPTI. N
PARTS LIST / MATERIAL			

INCH TOLERANCES		D. N. T. SCALE DRAWING	
VER	UP / -	+	-
.125	.25	.5	
.25	1.25	2	
1.25	5	3	
5	15	4	
15	4	6	
4	-	125	

ANGLES +/- 1 DEG		INITIAL ECN	
FINISH			
		2929	
		DATE ISSUED	7/24/2...

FROMMELT SAFETY PRODUCTS	
ARCHITECTURAL APPR VAL SLIDE AIR PH. NE# (... )553-556 (563)5 7-44. 1 FAX # (563)5 9-2776	
SIZE	M. DEL NUMBER
B 137	522. A. .1
SCALE	3/4" = 1'
PART #	
SHEET	C

NEXT ASSEMBLY

CURTAIN ATTACHMENT ASSEMBLY

SUPP RT PE ESTAL WITH 16" x 16" BASE PLATE

16" RITE-HITE "D" RS INC

REV	DESCRIPTI. N	ECN	DATE	BY	APPR. VED
D	ADD ".PTI. NAL VERT SUPP. RT"	5299	3/22/2 7	DAIS	
B	RELEASE 4. MIL SHADE PVC	36 5	5/3 /2...2	AJW	
C	UPDATE E--TRUNK	437.	2/23/2 4	AJW	

**SPECIFICATI. NS.**

**SIZE LIMITS**  
 MINIMUM WIDTH 2' - 0"  
 MINIMUM HEIGHT 2' - 0"  
 MAXIMUM WIDTH 12' - 0"  
 MAXIMUM HEIGHT 11' - 0"

**CURTAIN MATERIAL**  
 ST. 4. MIL. RANGE PVC  
 PT. 4. MIL. SHA. E. PVC  
 PT. 35. z. BLACK HYPAL. N

**PNEUMATIC CYLIN'ER**  
 1" B. RE R. LESS CYLIN'ER

**HEA'ER MATERIAL**  
 2" x 4" ALUMINUM EXTRUSI. N

**SPEE'.**  
 A JUSTIBLE

**.PTI. NAL C. NTR. LS**  
 JUNCTI. N B. X, SIZE 1. 1/2" x 1/2" x 6 1/4", 24V °C WITH TERMINAL BL. CKS AN 24V °C 4 WAY C. NTR. L VALVE. (.PTI. NAL 11. V AC)

**PTI. NAL C. NTR. LS**  
 C. NTR. L B. X, SIZE 1. 1/2" x 1/2" x 6 1/4", 11. V AC WITH .PEN. ST. P. AN CL. SE PUSHBU TT. NS WITH 11. V AC 4 WAY C. NTR. L VALVE.

CURTAIN ST. RAGE AREA	.PENING WI TH
11 INCHES	24 INCHES
13 INCHES	4 INCHES
17 INCHES	72 INCHES
19 INCHES	96 INCHES
21 INCHES	12 INCHES

ITEM	TY	PART N.	DESCRIPTI. N
PARTS LIST / MATERIAL			

INCH TOLERANCES		D. N. T. SCALE DRAWING	
VER	UP / -	+	-
.125	.25	.5	
.25	1.25	2	
1.25	5	3	
5	15	4	
15	4	6	
4	-	125	

ANGLES +/- 1 DEG		INITIAL ECN	
FINISH			
		2929	
		DATE ISSUED	7/24/2...

FROMMELT SAFETY PRODUCTS	
ARCH APPR VAL SWIVEL SLIDE AIR PH. NE# (... )553-556 (563)5 7-44. 1 FAX # (563)5 9-2776	
SIZE	M. DEL NUMBER
B 137	522. A. .2
SCALE	3/4" = 1'
PART #	
SHEET	D